



**Dr. CARYDIS PANAYOTIS**  
PROFESSOR OF  
EARTHQUAKE ENGINEERING  
PROFESSOR EMERITUS

**Dr. LEKKAS EFTHYMIS**  
PROFESSOR OF  
DYNAMIC TECTONIC APPLIED GEOLOGY AND  
DISASTER MANAGEMENT  
UNIVERSITY OF ATHENS  
PRESIDENT OF THE GEOLOGICAL SOCIETY OF  
GREECE  
PRESIDENT OF THE EARTHQUAKE PROTECTION  
AND PLANING ORGANIZATION OF GREECE

**PRELIMINARY REPORT**

**Mw=7.8 EARTHQUAKE CENTRAL NEPAL (25 APRIL 2015)**



## NEPAL

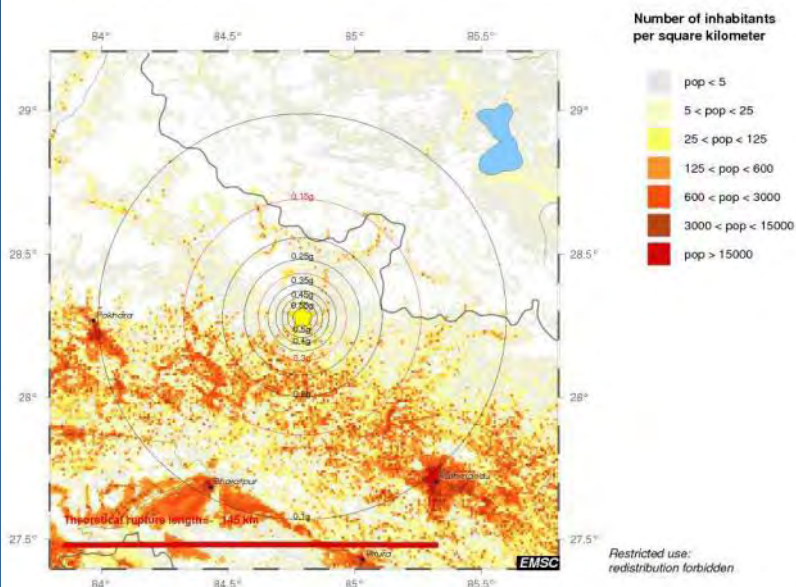
- AREA: **147.181 km<sup>2</sup>** WATER (%): **2.8**
- POPULATION: **26.494.504** (2011 Census)
- KINGDOM DECLARED: **25 September 1768**
- STATE DECLARED: **15 January 2007**
- REPUBLIC DECLARED: **28 May 2008**
- POPULATION DENSITY: **180/km<sup>2</sup>**
- PHYSIOGRAPHIC AREAS: **Mountain, Hill, Terai**
- MEDIAN AGE: **20.07**
- LIFE EXPECTANCY: **64.94 (Male), 67.44 (female)**
- POPULATION GROWTH RATE: **1.768%**
- RACIAL TYPES: **Aryan, Mongoloid**
- RELIGION: **Hinduism**
- GDP PER CAPITA: **\$ 2.310 (2013 estimate)**

Population and theoretical PGA computed for MAG=7.6 (limit of validity of PGA law)

M7.8 2015/04/25 - 06:11:26 UTC

Lat 28.28 Lon 84.79 Depth 10.0 km

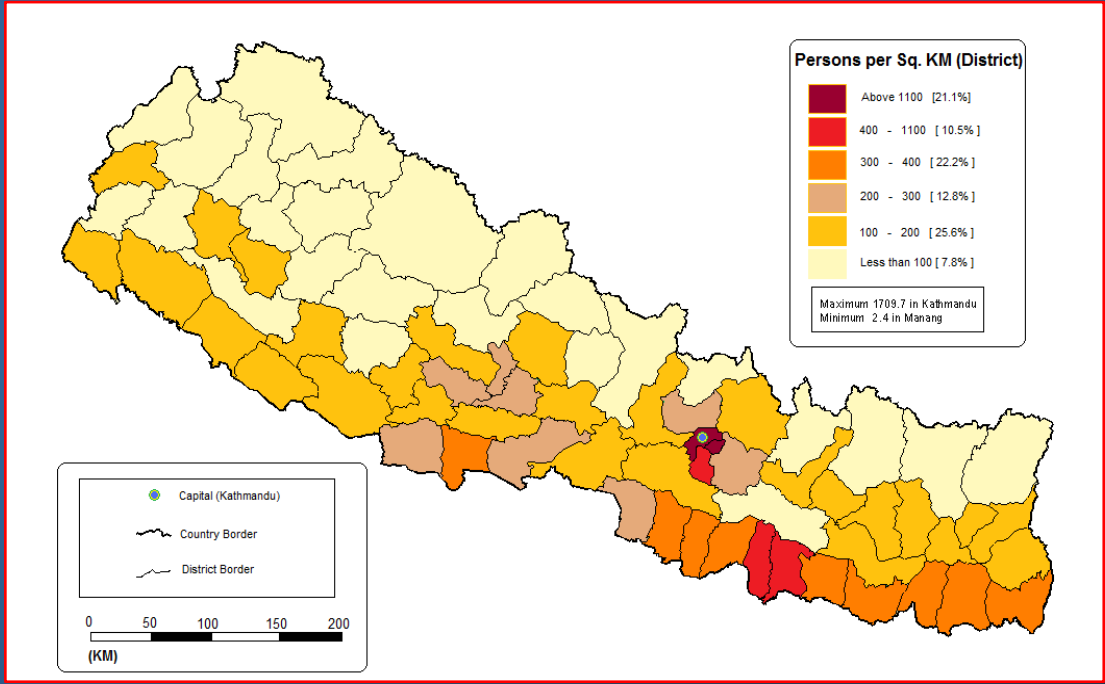
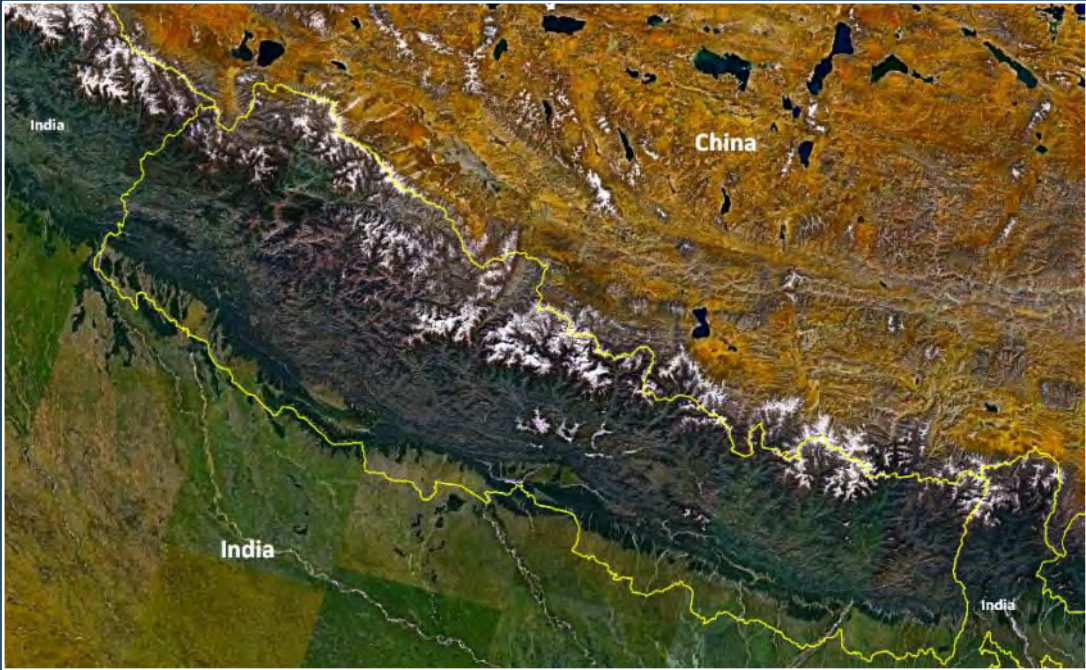
0 km 50 km





NATIONAL & KAPODISTRIAN UNIVERSITY OF ATHENS  
POST GRADUATE PROGRAM  
ENVIRONMENTAL, DISASTER AND CRISES MANAGEMENT









DIS  
GR  
SAS





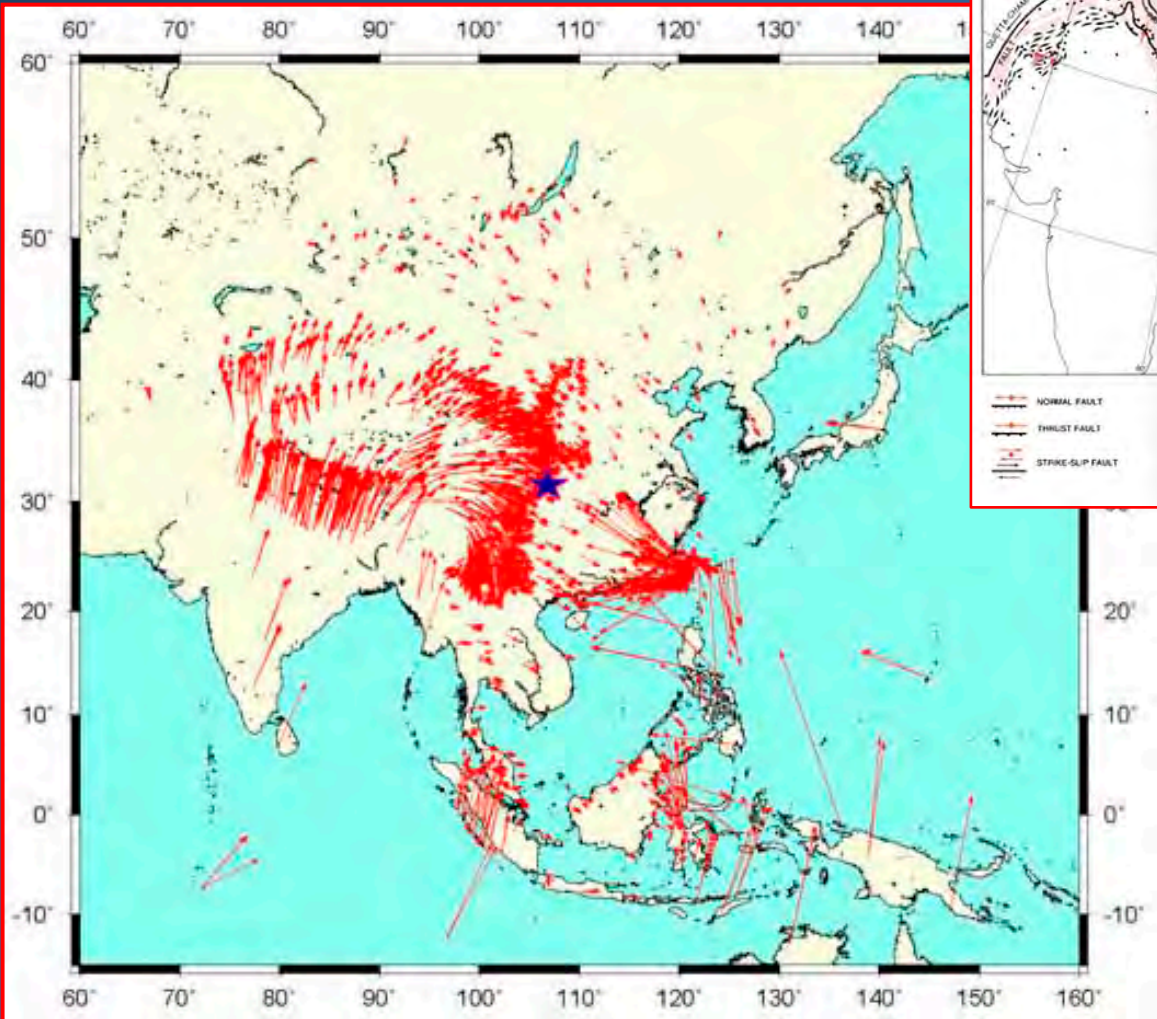
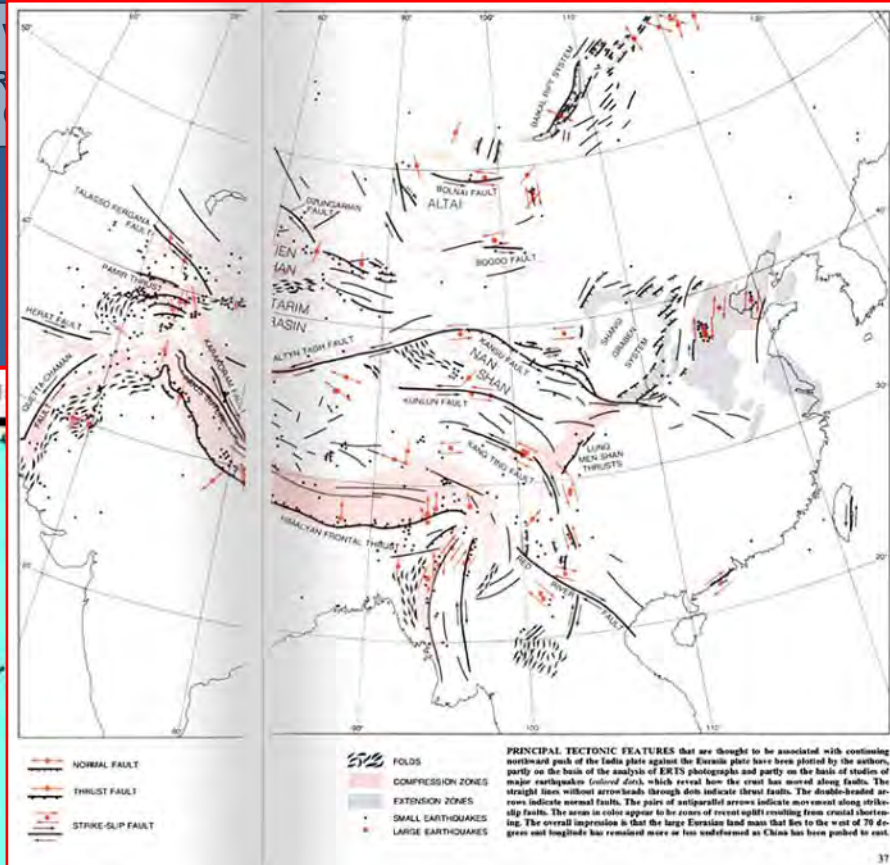
**PRELIMINARY REPORT**

**M<sub>w</sub>=7.8 EARTHQUAKE CENTRAL NEPAL (25 APRIL 2015)**

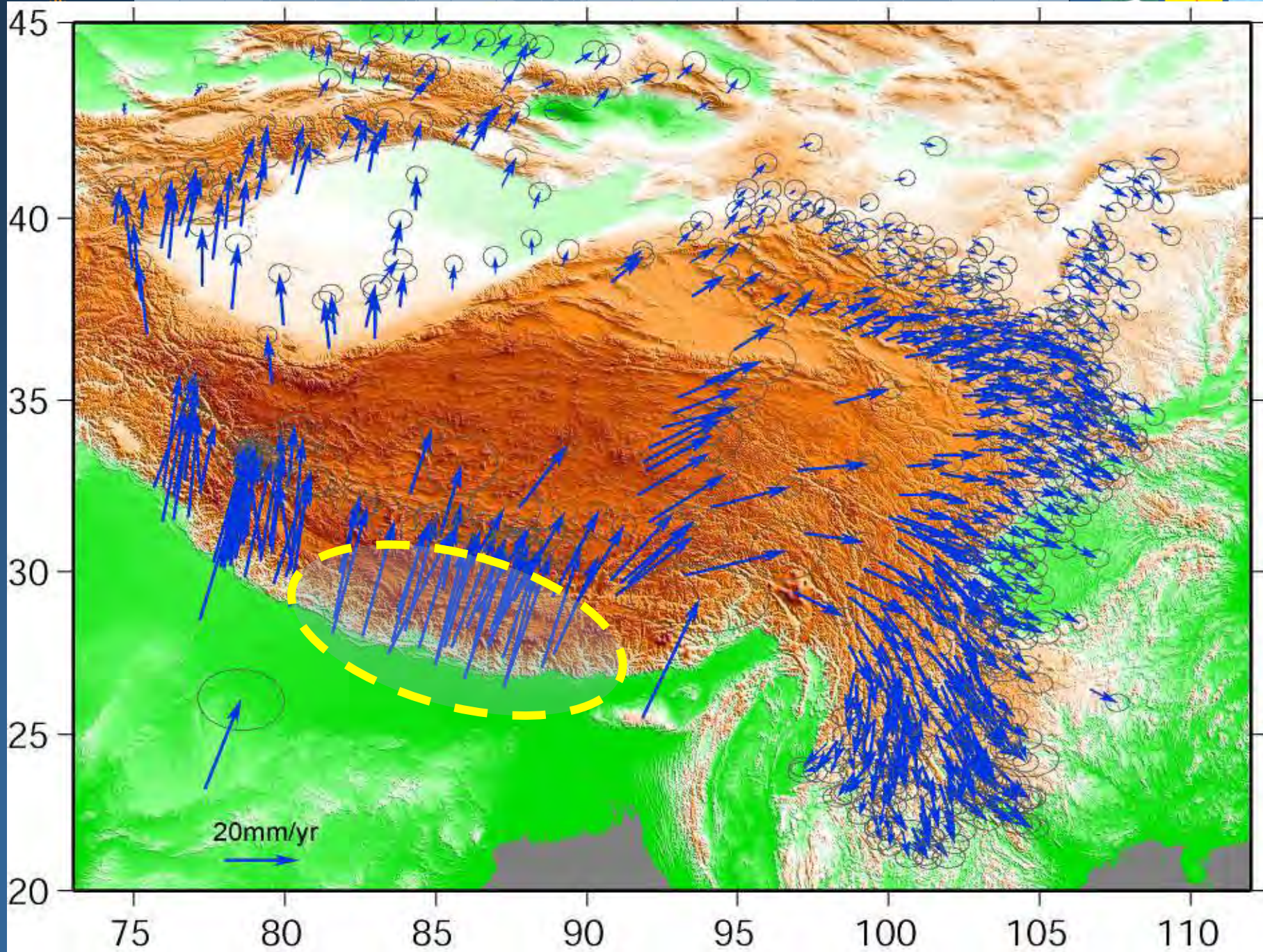
**GEODYNAMIC & SEISMOTECTONIC SETTING**

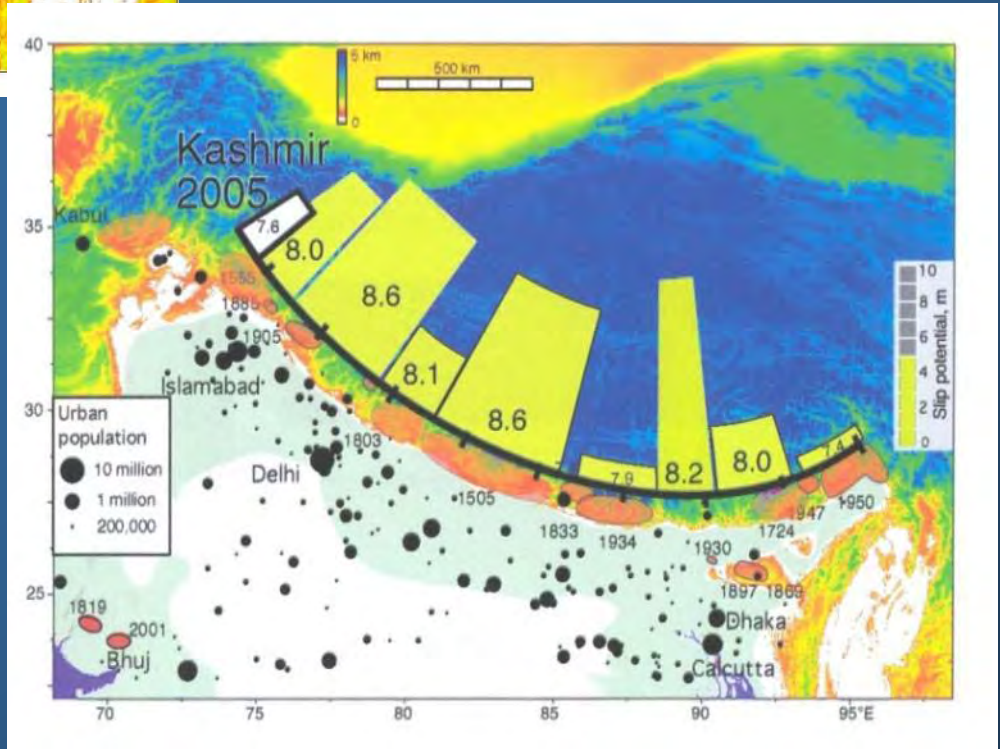
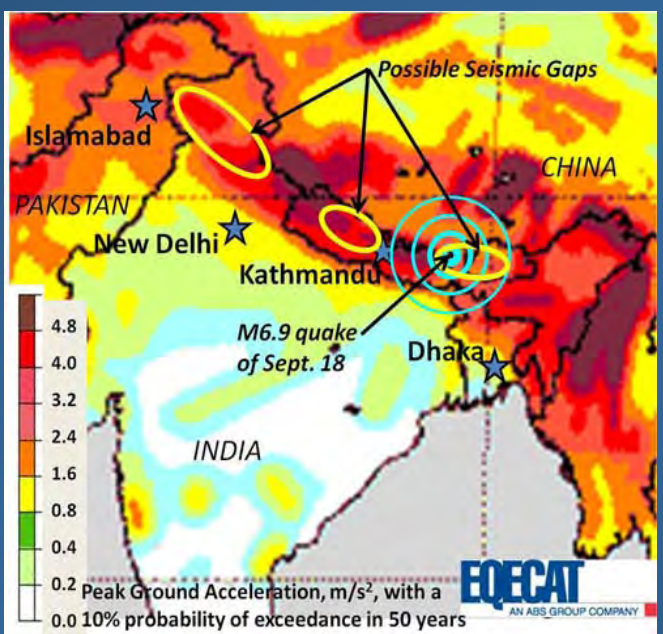
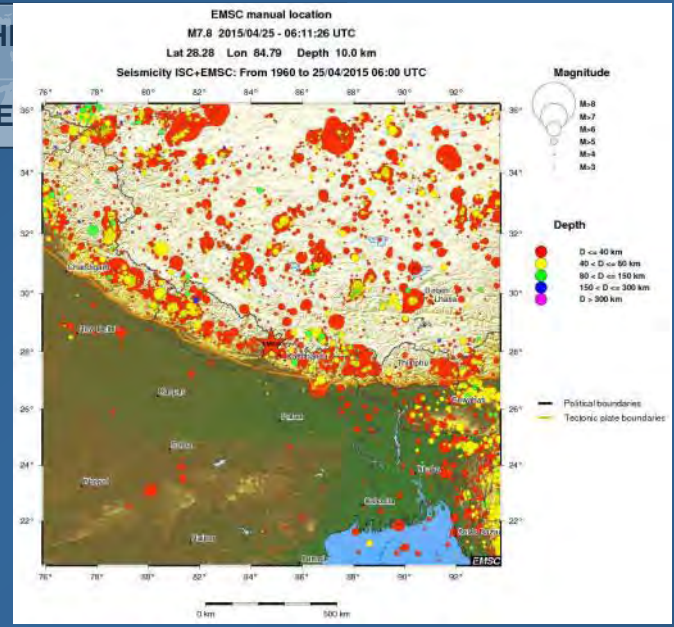
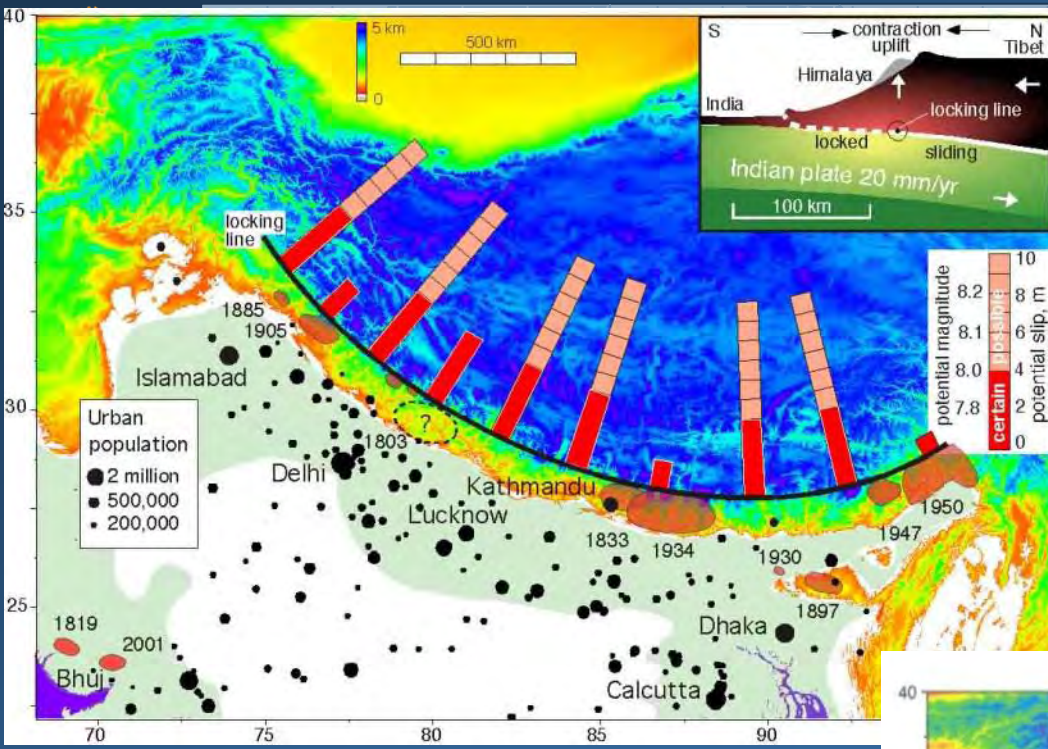


NATIONAL & KAPODISTRIAN UNIVERSITY OF ATHENS  
 POST GRADUATE PROGRAM  
 ENVIRONMENTAL, DISASTER AND CLIMATE STUDIES











**PRELIMINARY REPORT**

**M<sub>w</sub>=7.8 EARTHQUAKE CENTRAL NEPAL (25 APRIL 2015)**

**SEISMOLOGICAL DATA & FIELD OBSERVATIONS**



NATIONAL & KAPODISTRIAN UNIVERSITY OF ATHENS  
POST GRADUATE PROGRAM  
ENVIRONMENTAL, DISASTER AND CRISES MANAGEMENT







NATIONAL & KAPODISTRIAN UNIVERSITY OF ATHENS  
POST GRADUATE PROGRAM  
ENVIRONMENTAL, DISASTER AND CRISES MANAGEMENT











IN  
P  
ID

INI  
PR  
ID





NATIONAL & KAPODISTRIAN UNIVERSITY OF ATHENS  
POST GRADUATE PROGRAM  
ENVIRONMENTAL, DISASTER AND CRISES MANAGEMENT





NATIONAL & KAPODISTRIAN UNIVERSITY OF ATHENS  
POST GRADUATE PROGRAM  
ENVIRONMENTAL, DISASTER AND CRISES MANAGEMENT





NATIONAL & KAPODISTRIAN UNIVERSITY OF ATHENS
POST GRADUATE PROGRAM
ENVIRONMENTAL, DISASTER AND CRISES MANAGEMENT



U.S. DEPARTMENT OF THE INTERIOR
U.S. GEOLOGICAL SURVEY

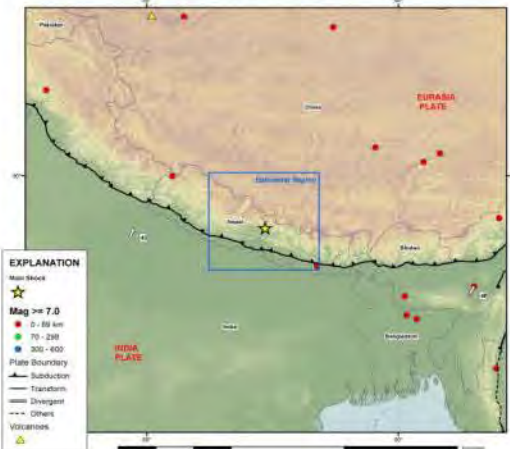
M7.8 Nepal Earthquake of 25 April 2015



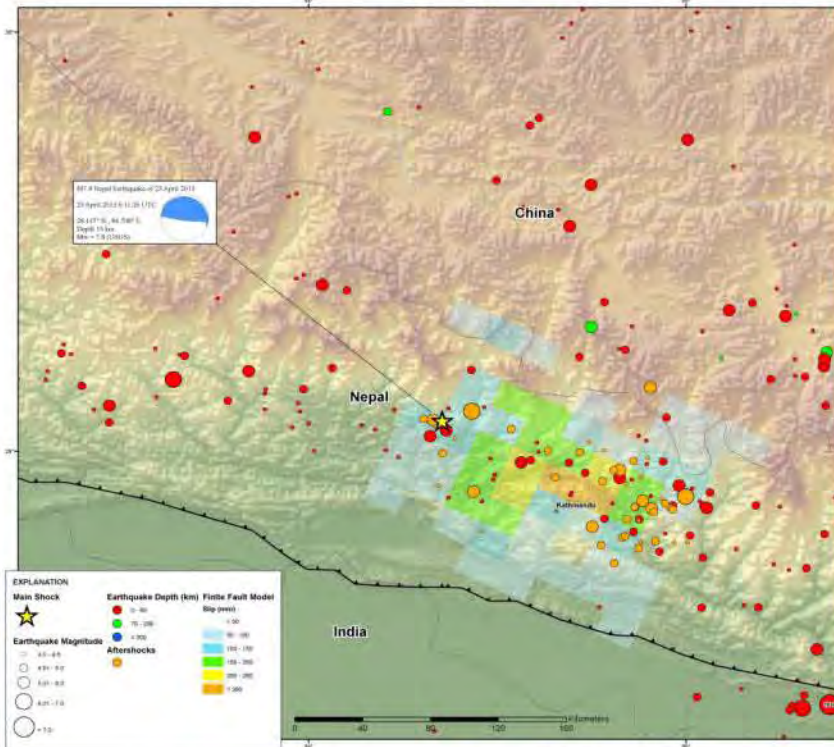
EARTHQUAKE SUMMARY MAP

Prepared in cooperation with the Global Seismographic Network GSN

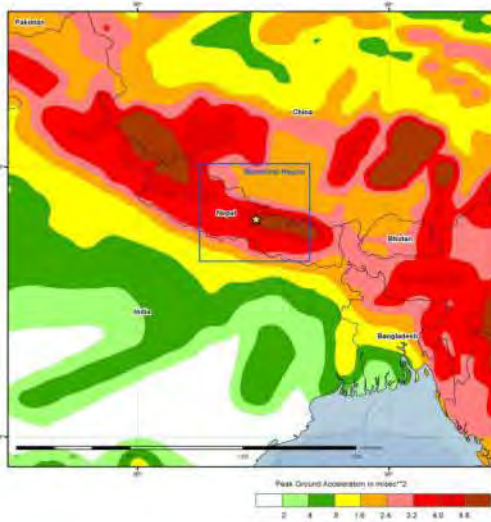
Tectonic Setting



Epicentral Region



Seismic Hazard



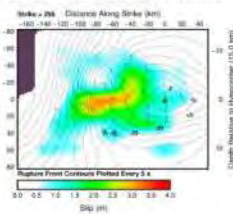
Tectonic Summary

The April 25, 2015 M 7.8 Nepal earthquake occurred as the result of thrust faulting on or near the main frontal thrust between the subducting India plate and the overriding Eurasia plate to the north.

Although a major plate boundary with a history of large-to-great sized earthquakes, large earthquakes on the Himalayan thrust are rare in the documented historical era.

Finite Fault Model

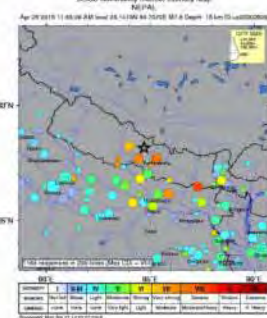
Distribution of the slip (in cm) along the fault plane for the earthquake. The slip is shown as a color scale from 0 to 10 cm.



PAGER (Public Access to Real-time Earthquake Data) report for the M7.8 Nepal earthquake. Includes estimated fatalities, economic losses, and population exposure data.

DYFI?

USGS Community Internet Intensity Map



DATA SOURCES:

- USGS National Earthquake Information Center (NEIC)
USGS National Center for Data Collection (NCEC)
USGS National Center for Earthquake Information Service (NCEIS)
USGS National Center for Global Positioning System (GPS)
USGS National Center for Volcanic Geology and Hazard Assessment (NCVGH)
USGS National Center for Earthquake Prediction (NCEP)
USGS National Center for Earthquake Forecasting (NCEF)
USGS National Center for Earthquake Hazard Assessment (NCEHA)
USGS National Center for Earthquake Response and Recovery (NCERR)
USGS National Center for Earthquake System Science (NCESS)
USGS National Center for Earthquake System Science (NCESS)
USGS National Center for Earthquake System Science (NCESS)

- USGS National Earthquake Information Center (NEIC)
USGS National Center for Data Collection (NCEC)
USGS National Center for Earthquake Information Service (NCEIS)
USGS National Center for Global Positioning System (GPS)
USGS National Center for Volcanic Geology and Hazard Assessment (NCVGH)
USGS National Center for Earthquake Prediction (NCEP)
USGS National Center for Earthquake Forecasting (NCEF)
USGS National Center for Earthquake Hazard Assessment (NCEHA)
USGS National Center for Earthquake Response and Recovery (NCERR)
USGS National Center for Earthquake System Science (NCESS)
USGS National Center for Earthquake System Science (NCESS)
USGS National Center for Earthquake System Science (NCESS)



**PRELIMINARY REPORT**

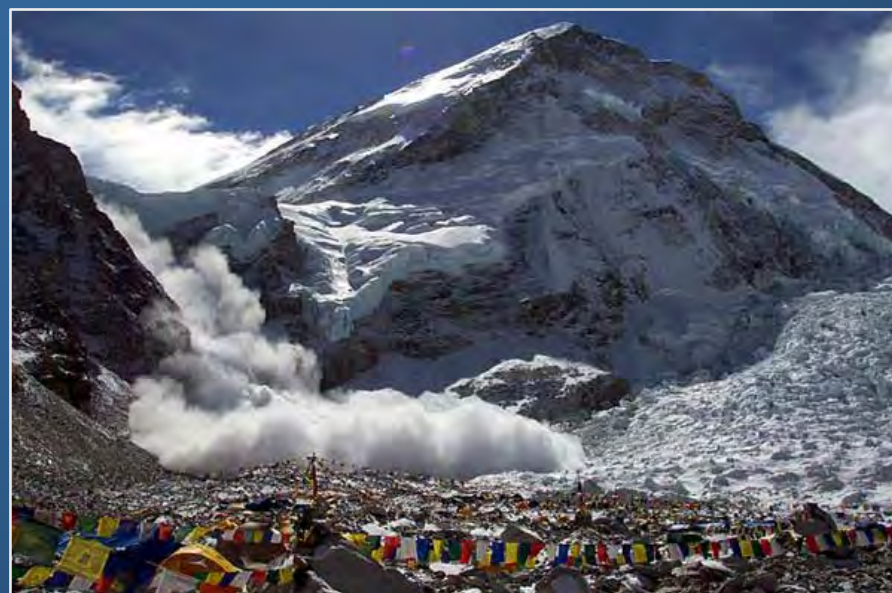
**Mw=7.8 EARTHQUAKE CENTRAL NEPAL (25 APRIL 2015)**

**EARTHQUAKE ENVIRONMENTAL EFFECTS**





NATIONAL & KAPODISTRIAN UNIVERSITY OF ATHENS  
POST GRADUATE PROGRAM  
ENVIRONMENTAL, DISASTER AND CRISES MANAGEMENT





PRELIMINARY REPORT

Mw=7.8 EARTHQUAKE CENTRAL NEPAL (25 APRIL 2015)

RESCUE



ΕΘΝΙΚΟ ΚΑΙ ΚΑΠΟΔΙΣΤΡΙΑΚΟ ΠΑΝΕΠΙΣΤΗΜΙΟ ΑΘΗΝΩΝ  
ΠΡΟΓΡΑΜΜΑ ΜΕΤΑΠΤΥΧΙΑΚΩΝ ΣΠΟΥΔΩΝ  
ΣΤΡΑΤΗΓΙΚΕΣ ΔΙΑΧΕΙΡΙΣΗΣ  
ΠΕΡΙΒΑΛΛΟΝΤΟΣ - ΚΑΤΑΣΤΡΟΦΩΝ - ΚΡΙΣΕΩΝ





NATIONAL & KAPODISTRIAN UNIVERSITY OF ATHENS  
POST GRADUATE PROGRAM  
ENVIRONMENTAL, DISASTER AND CRISIS MANAGEMENT







**PRELIMINARY REPORT**

**Mw=7.8 EARTHQUAKE CENTRAL NEPAL (25 APRIL 2015)**

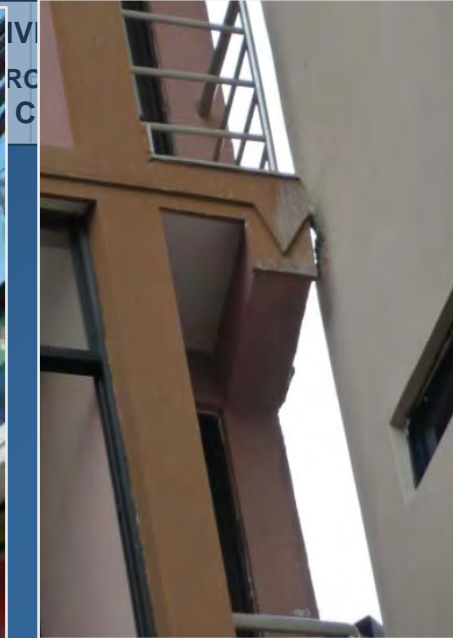
**EARTHQUAKE DAMAGE**





NATIONAL & KAPODISTRIAN UNIVERSITY OF ATHENS  
POST GRADUATE PROGRAM  
ENVIRONMENTAL, DISASTER AND CRISES MANAGEMENT





IV  
RC  
C



**PRELIMINARY REPORT**

**Mw=7.8 EARTHQUAKE CENTRAL NEPAL (25 APRIL 2015)**

**EARTHQUAKE DAMAGE**









NATIONAL & KAPODISTRIAN UNIVERSITY OF ATHENS  
POST GRADUATE PROGRAM  
ENVIRONMENTAL, DISASTER AND CRISES MANAGEMENT







**PRELIMINARY REPORT**

**M<sub>w</sub>=7.8 EARTHQUAKE CENTRAL NEPAL (25 APRIL 2015)**

**MONUMENT DAMAGE**



NA  
IV

UNIVERSITY OF ATHENS  
PROGRAM  
RISK ASSESSMENT AND  
DISASTER MANAGEMENT



ISTRIAN UNIVERSITY OF A  
GRADUATE PROGRAM  
ASTER AND CRISES MANA





NATIONAL & KAPODISTRIAN UNIVERSITY OF ATHENS  
POST GRADUATE PROGRAM  
ENVIRONMENTAL, DISASTER AND CRISES MANAGEMENT







NATIONAL & KAPODISTRIAN UNIVERSITY OF ATHENS  
POST GRADUATE PROGRAM  
ENVIRONMENTAL, DISASTER AND CRISES MANAGEMENT







**PRELIMINARY REPORT**

**M<sub>w</sub>=7.8 EARTHQUAKE CENTRAL NEPAL (25 APRIL 2015)**

**RESPONSE**



HENS  
AGEMENT









NATIONAL & KAPODISTRIAN UNIVERSITY OF ATHENS  
POST GRADUATE PROGRAM  
ENVIRONMENTAL, DISASTER AND CRISES MANAGEMENT









NATIONAL & KAPODISTRIAN UNIVERSITY OF ATHENS  
POST GRADUATE PROGRAM  
ENVIRONMENTAL, DISASTER AND CRISES MANAGEMENT







**Dr. CARYDIS PANAYOTIS**  
PROFESSOR OF  
EARTHQUAKE ENGINEERING  
PROFESSOR EMERITUS

**Dr. LEKKAS EFTHYMIS**  
PROFESSOR OF  
DYNAMIC TECTONIC APPLIED GEOLOGY AND  
DISASTER MANAGEMENT  
UNIVERSITY OF ATHENS  
PRESIDENT OF GEOLOGICAL SOCIETY OF  
GREECE  
PRESIDENT OF THE EARTHQUAKE PROTECTION  
AND PLANING ORGANIZATION OF GREECE

**PRELIMINARY REPORT**

**Mw=7.8 EARTHQUAKE CENTRAL NEPAL (25 APRIL 2015)**